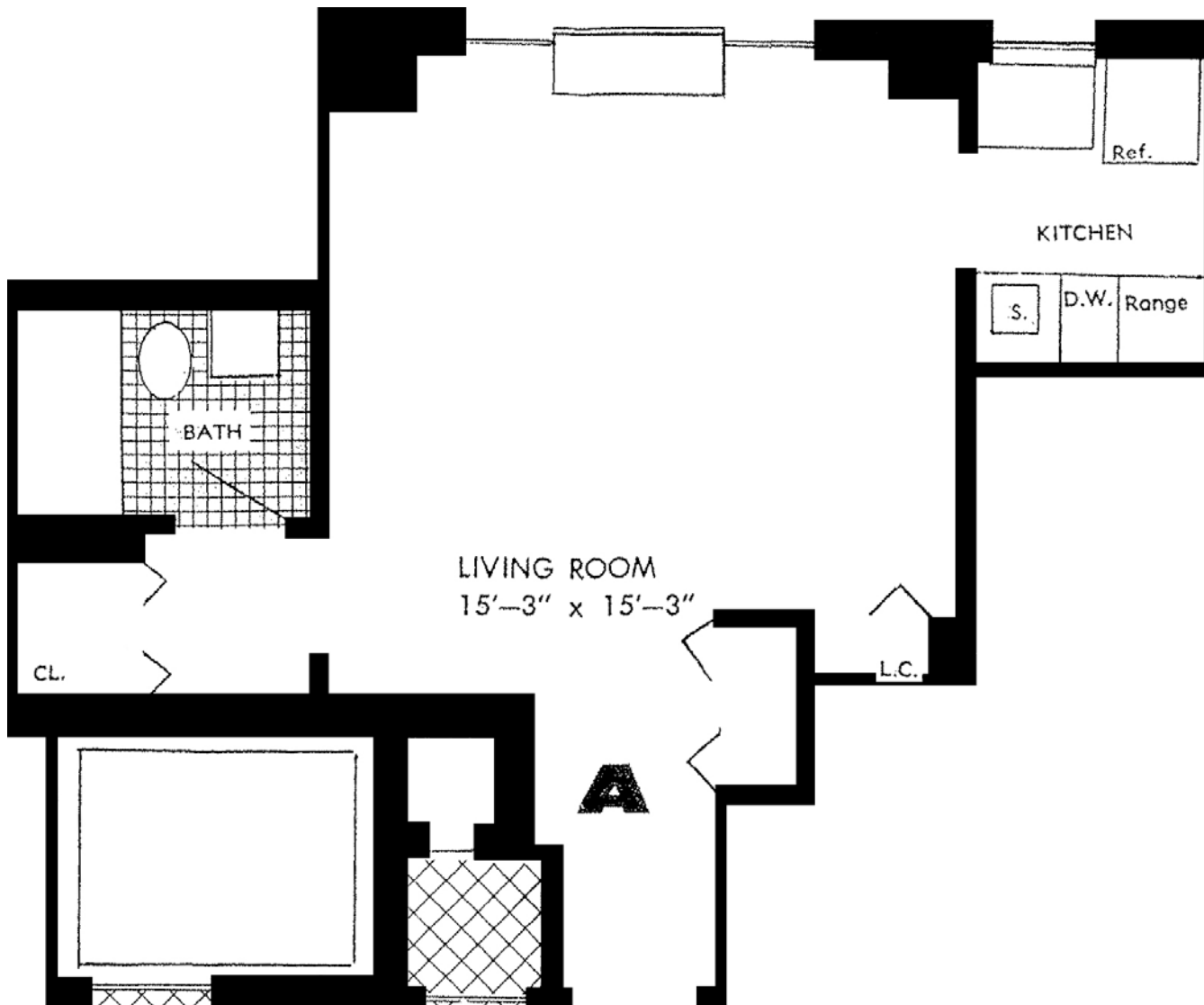


330  
WEST  
56<sup>th</sup>  
STREET



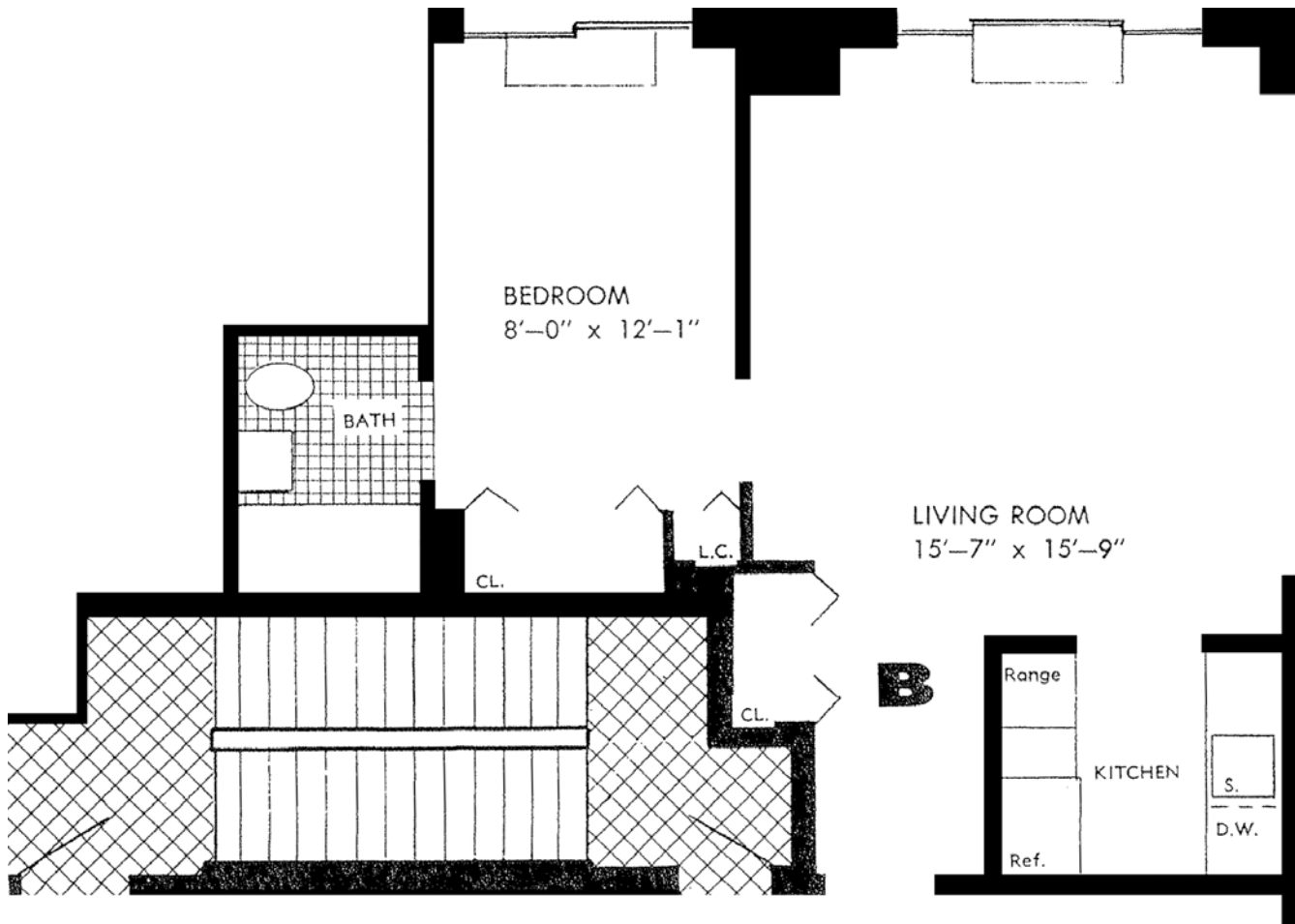
ABBREVIATIONS

- CL. Closet
- D.W. Dish Washer
- L.C. Linen Closet
- Ref. Refrigerator
- S. Sink
- W.I. Walk In

**FLOORS 2 Thru 12**

NOTE: All dimensions are approximate. Plan is subject to change in fenestration and/or other revisions deemed advisable by the Department of Housing and Buildings or other departments having jurisdiction over some, or necessary due to job condition.

330  
WEST  
56<sup>th</sup>  
STREET



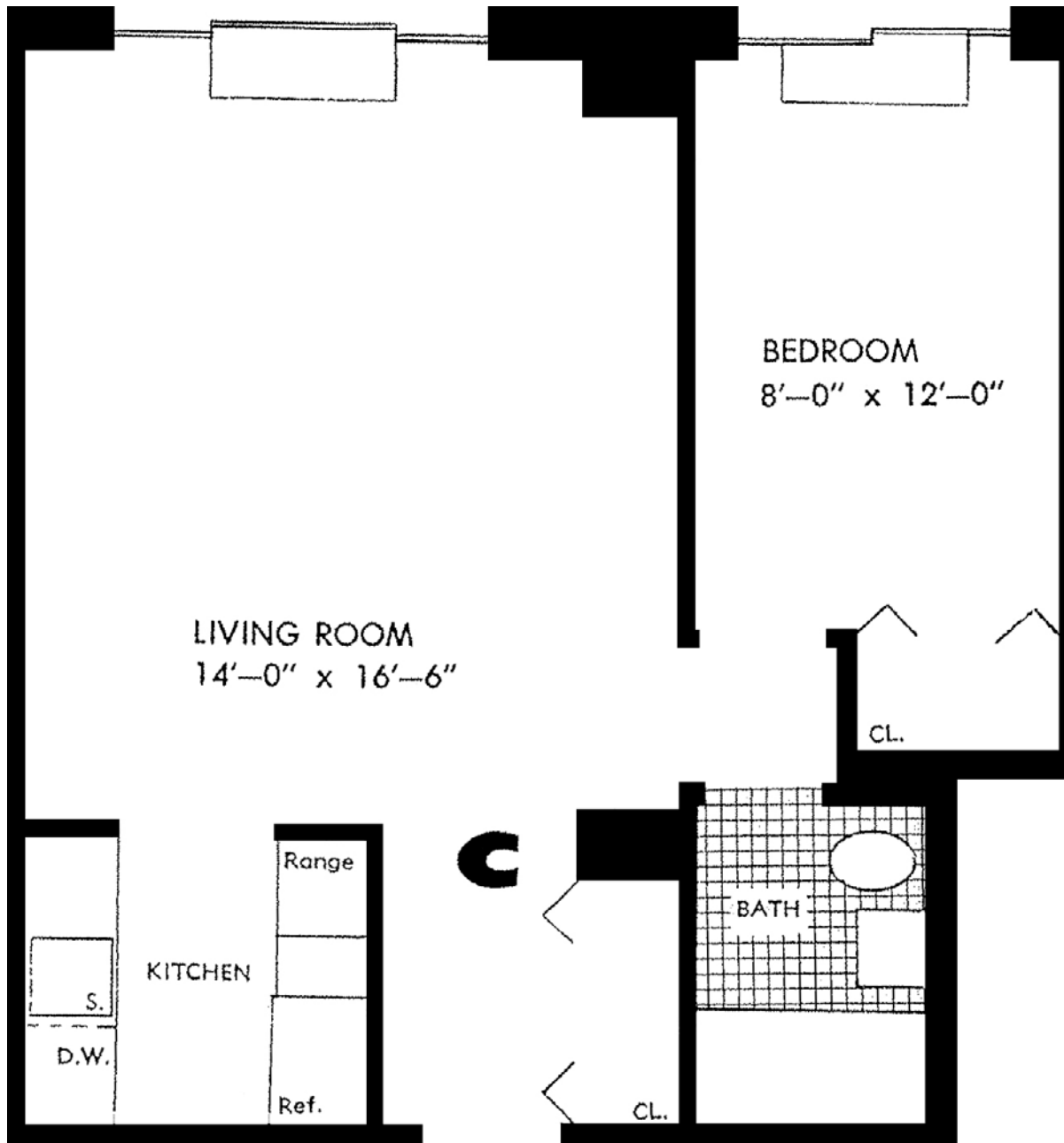
ABBREVIATIONS

- CL. Closet
- D.W. Dish Washer
- L.C. Linen Closet
- Ref. Refrigerator
- S. Sink
- W.I. Walk In

**FLOORS 2 Thru 12**

NOTE: All dimensions are approximate. Plan is subject to change in fenestration and/or other revisions deemed advisable by the Department of Housing and Buildings or other departments having jurisdiction over same, or necessary due to job condition.

330  
WEST  
56<sup>th</sup>  
STREET



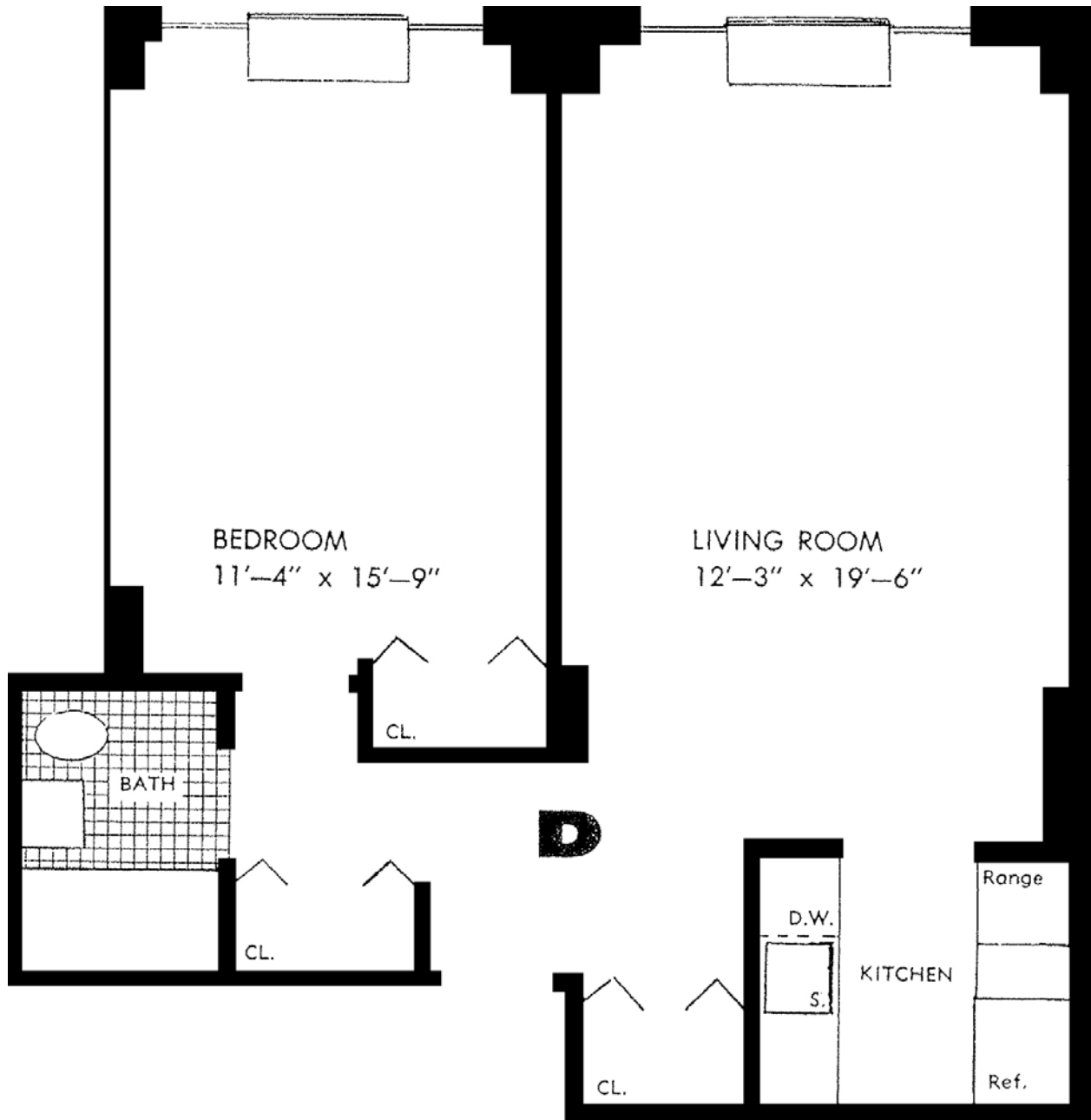
ABBREVIATIONS

- CL. Closet
- D.W. Dish Washer
- L.C. Linen Closet
- Ref. Refrigerator
- S. Sink
- W.I. Walk In

**FLOORS 2 Thru 12**

NOTE: All dimensions are approximate. Plan is subject to change in fenestration and/or other revisions deemed advisable by the Department of Housing and Buildings or other departments having jurisdiction over same, or necessary due to job condition.

330  
WEST  
56<sup>th</sup>  
STREET



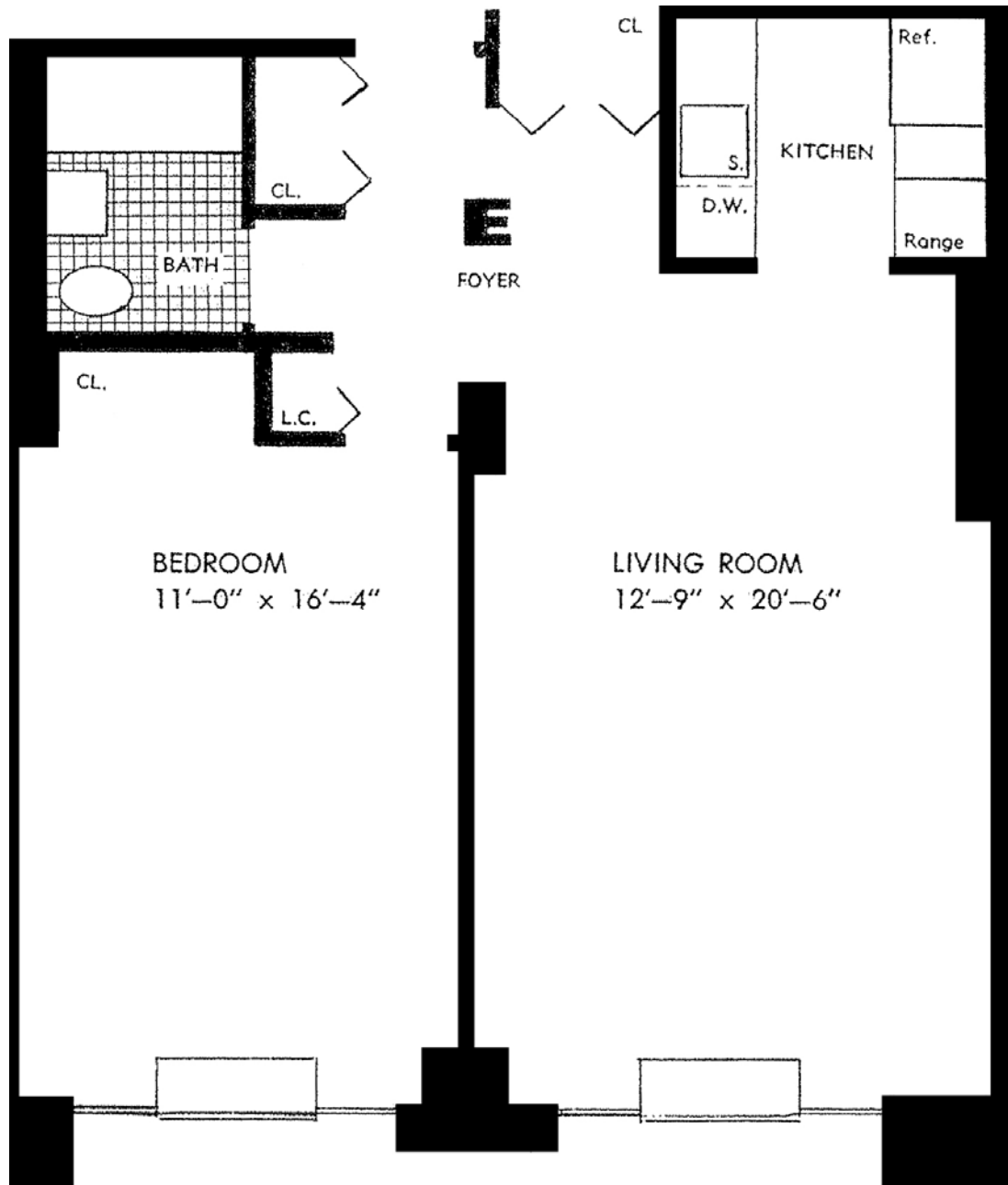
ABBREVIATIONS

- CL. Closet
- D.W. Dish Washer
- L.C. Linen Closet
- Ref. Refrigerator
- S. Sink
- W.I. Walk In

**FLOORS 2 Thru 12**

NOTE: All dimensions are approximate. Plan is subject to change in fenestration and/or other revisions deemed advisable by the Department of Housing and Buildings or other departments having jurisdiction over same, or necessary due to job condition.

330  
WEST  
56<sup>th</sup>  
STREET



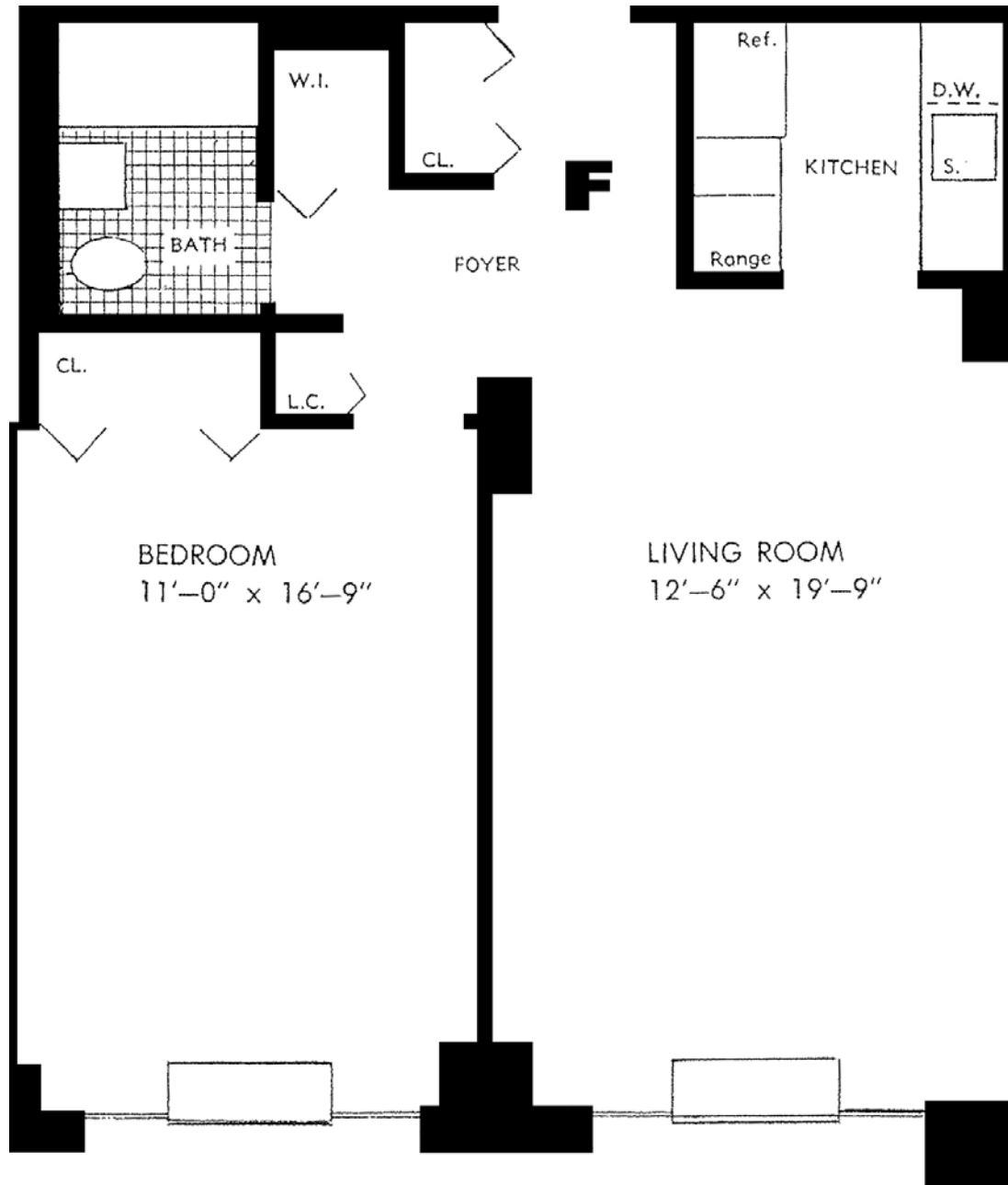
ABBREVIATIONS

- CL. Closet
- D.W. Dish Washer
- L.C. Linen Closet
- Ref. Refrigerator
- S. Sink
- W.I. Walk In

**FLOORS 2 Thru 12**

NOTE: All dimensions are approximate. Plan is subject to change in fenestration and/or other revisions deemed advisable by the Department of Housing and Buildings or other departments having jurisdiction over some, or necessary due to job condition.

330  
WEST  
56<sup>th</sup>  
STREET



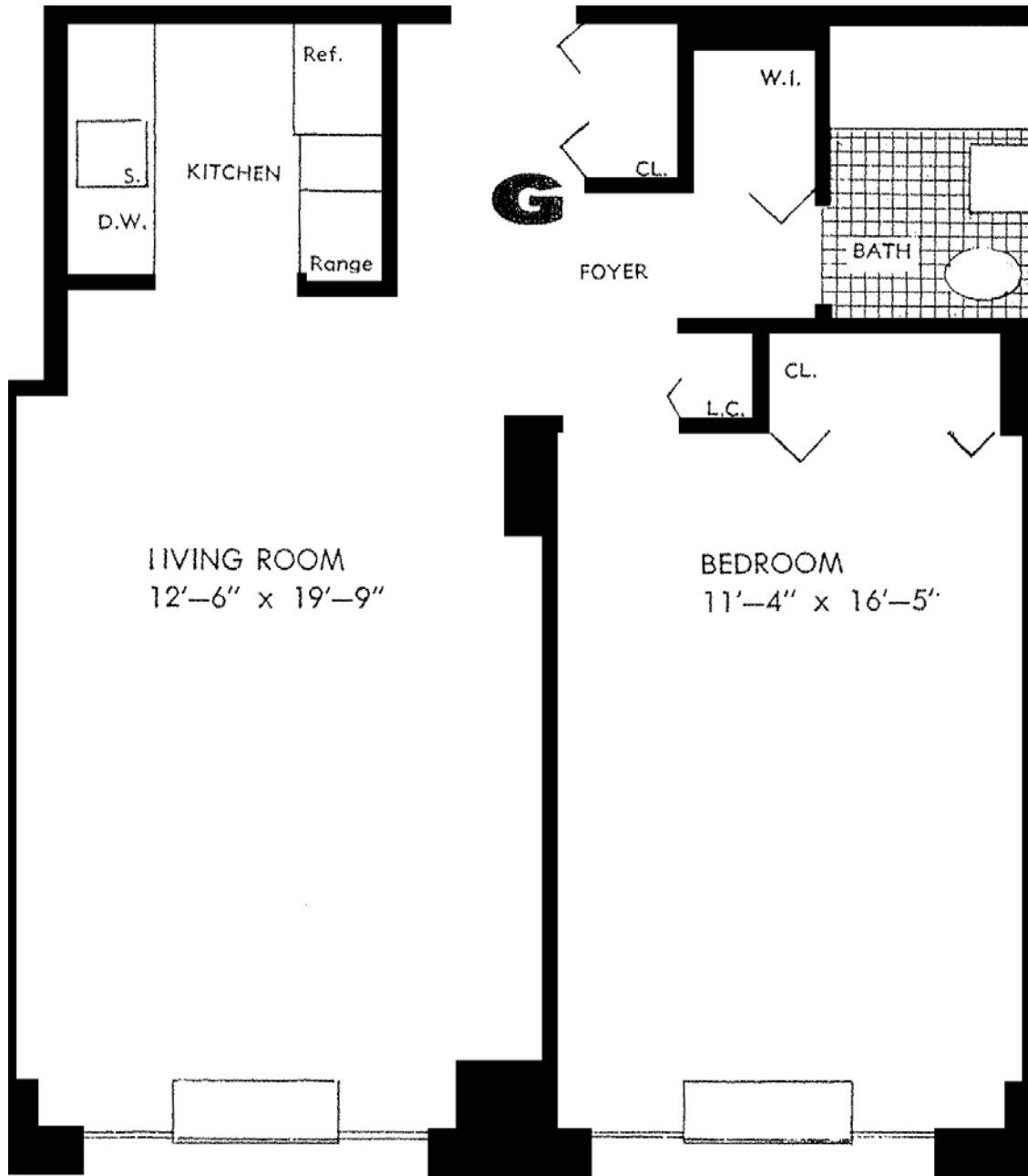
ABBREVIATIONS

- CL. Closet
- D.W. Dish Washer
- L.C. Linen Closet
- Ref. Refrigerator
- S. Sink
- W.I. Walk In

**FLOORS 2 Thru 12**

NOTE: All dimensions are approximate. Plan is subject to change in fenestration and/or other revisions deemed advisable by the Department of Housing and Buildings or other departments having jurisdiction over same, or necessary due to job condition.

330  
WEST  
56<sup>th</sup>  
STREET



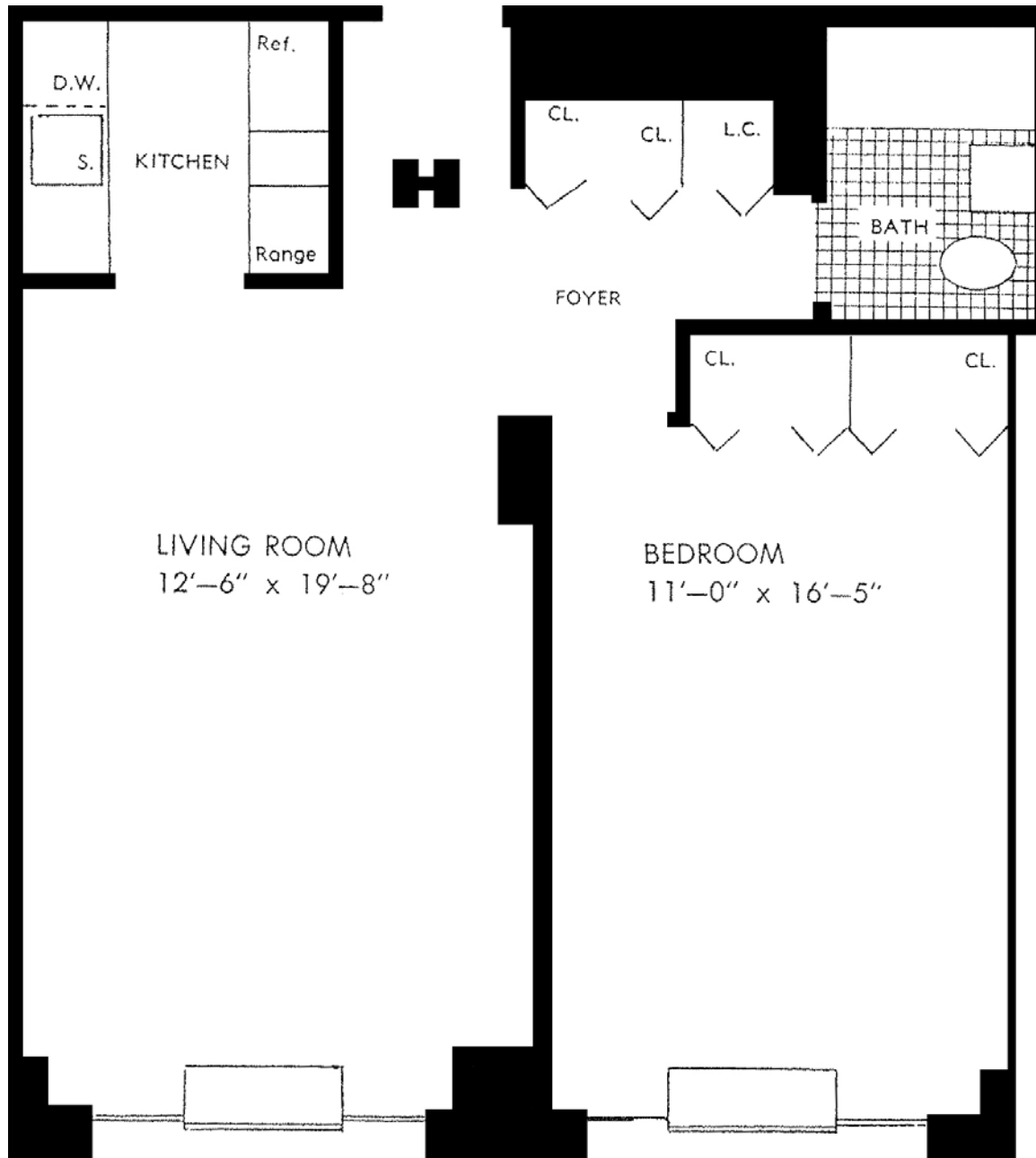
ABBREVIATIONS

- CL. Closet
- D.W. Dish Washer
- L.C. Linen Closet
- Ref. Refrigerator
- S. Sink
- W.I. Walk In

**FLOORS 2 Thru 12**

NOTE: All dimensions are approximate. Plan is subject to change in fenestration and/or other revisions deemed advisable by the Department of Housing and Buildings or other departments having jurisdiction over same, or necessary due to job condition.

330  
WEST  
56<sup>th</sup>  
STREET



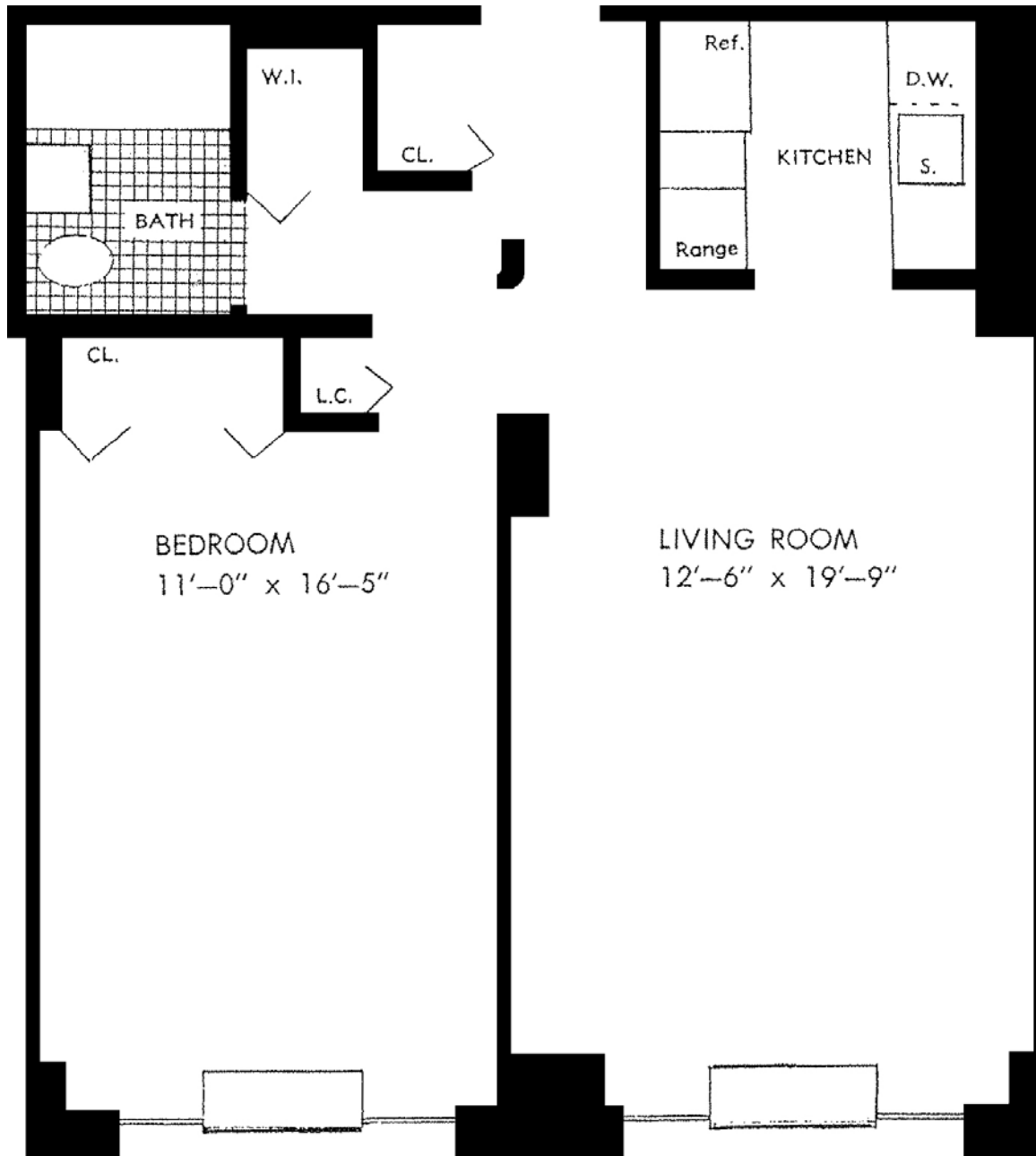
ABBREVIATIONS

- CL. Closet
- D.W. Dish Washer
- L.C. Linen Closet
- Ref. Refrigerator
- S. Sink
- W.I. Walk In

**FLOORS 2 Thru 12**

NOTE: All dimensions are approximate. Plan is subject to change in fenestration and/or other revisions deemed advisable by the Department of Housing and Buildings or other departments having jurisdiction over same, or necessary due to job condition.

330  
WEST  
56<sup>th</sup>  
STREET



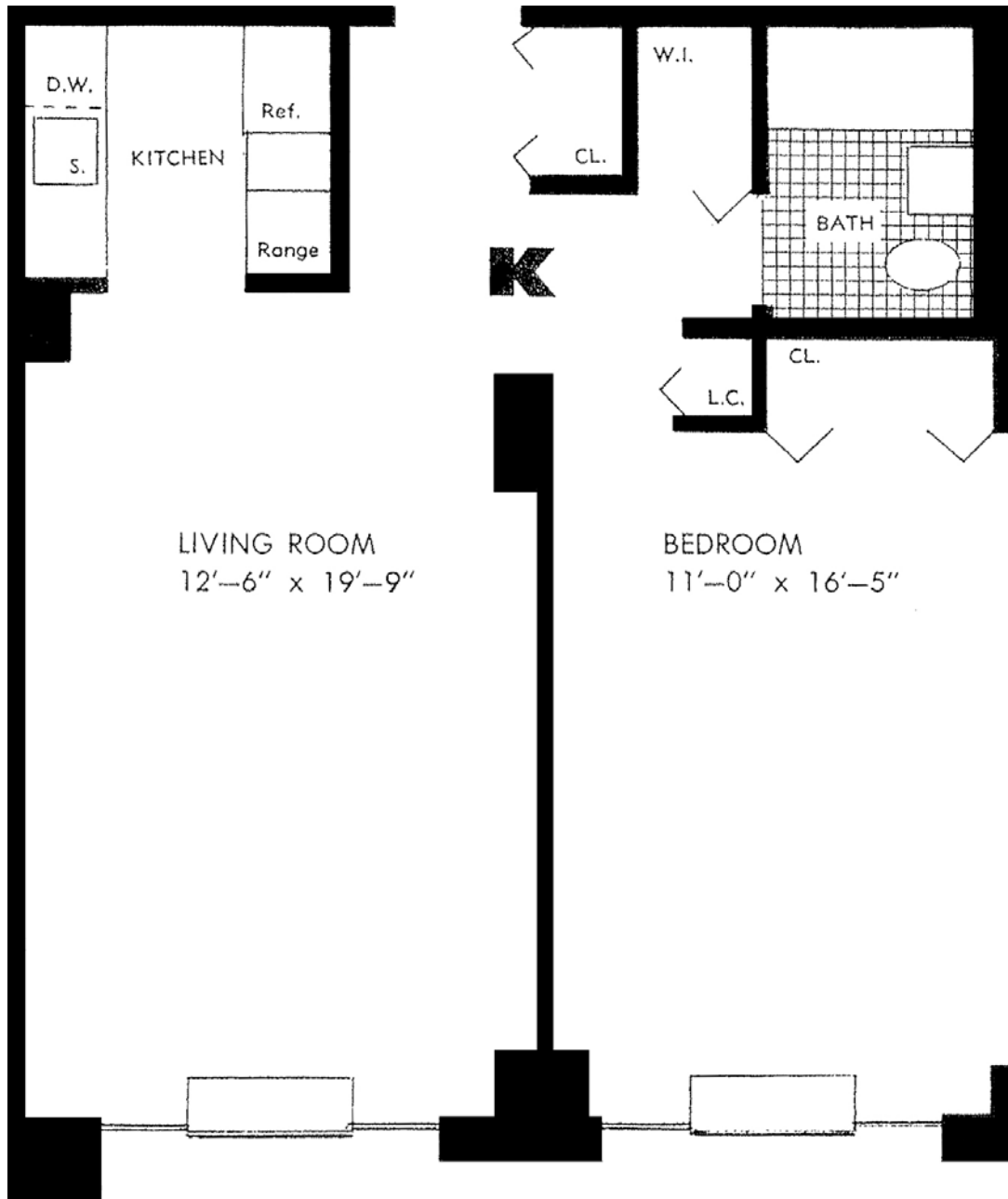
ABBREVIATIONS

- CL. Closet
- D.W. Dish Washer
- L.C. Linen Closet
- Ref. Refrigerator
- S. Sink
- W.I. Walk In

**FLOORS 2 Thru 12**

NOTE: All dimensions are approximate. Plan is subject to change in fenestration and/or other revisions deemed advisable by the Department of Housing and Buildings or other departments having jurisdiction over same, or necessary due to job condition.

330  
WEST  
56<sup>th</sup>  
STREET



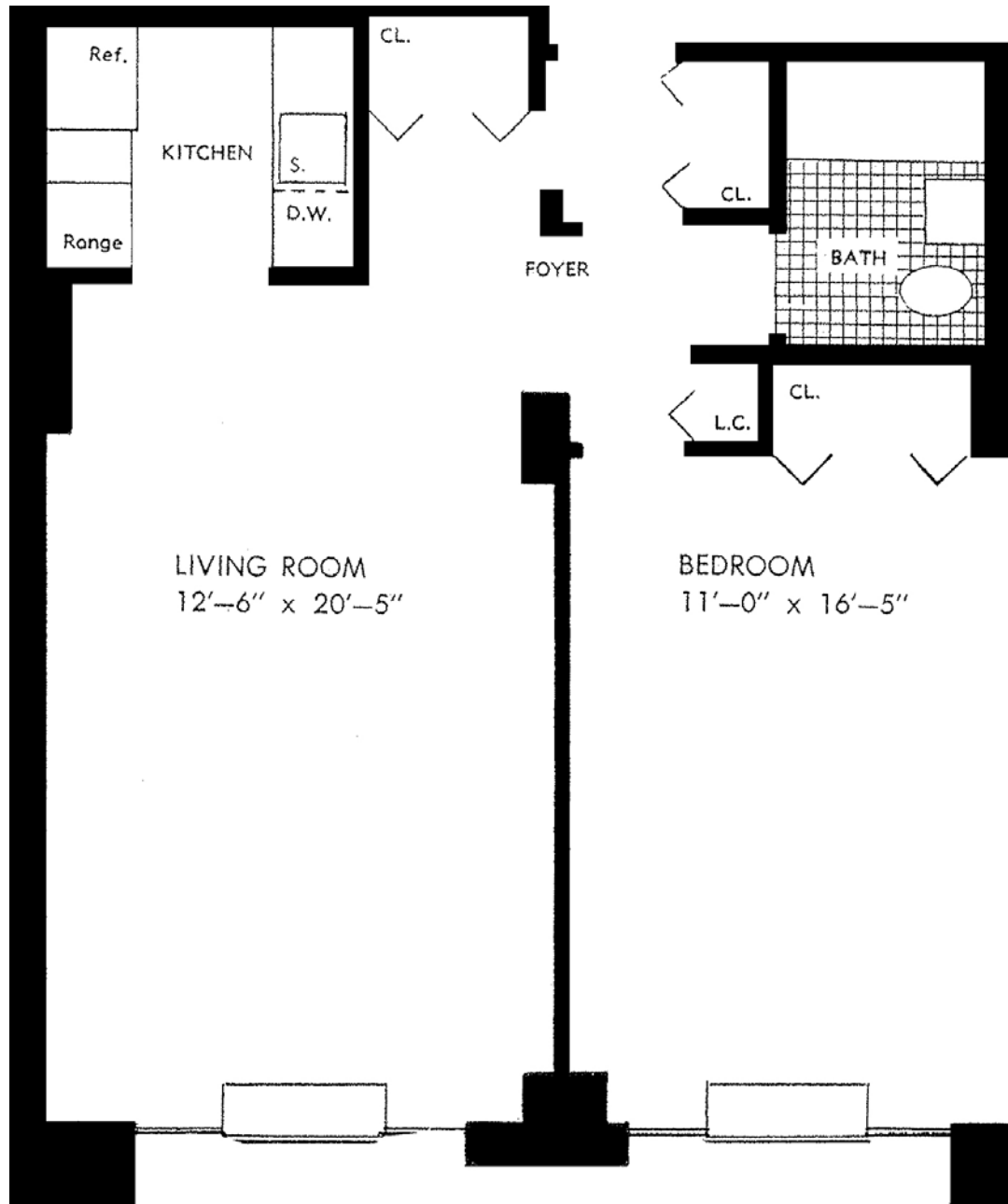
ABBREVIATIONS

- CL. Closet
- D.W. Dish Washer
- L.C. Linen Closet
- Ref. Refrigerator
- S. Sink
- W.I. Walk In

**FLOORS 2 Thru 12**

NOTE: All dimensions are approximate. Plan is subject to change in fenestration and/or other revisions deemed advisable by the Department of Housing and Buildings or other departments having jurisdiction over same, or necessary due to job condition.

330  
WEST  
56<sup>th</sup>  
STREET



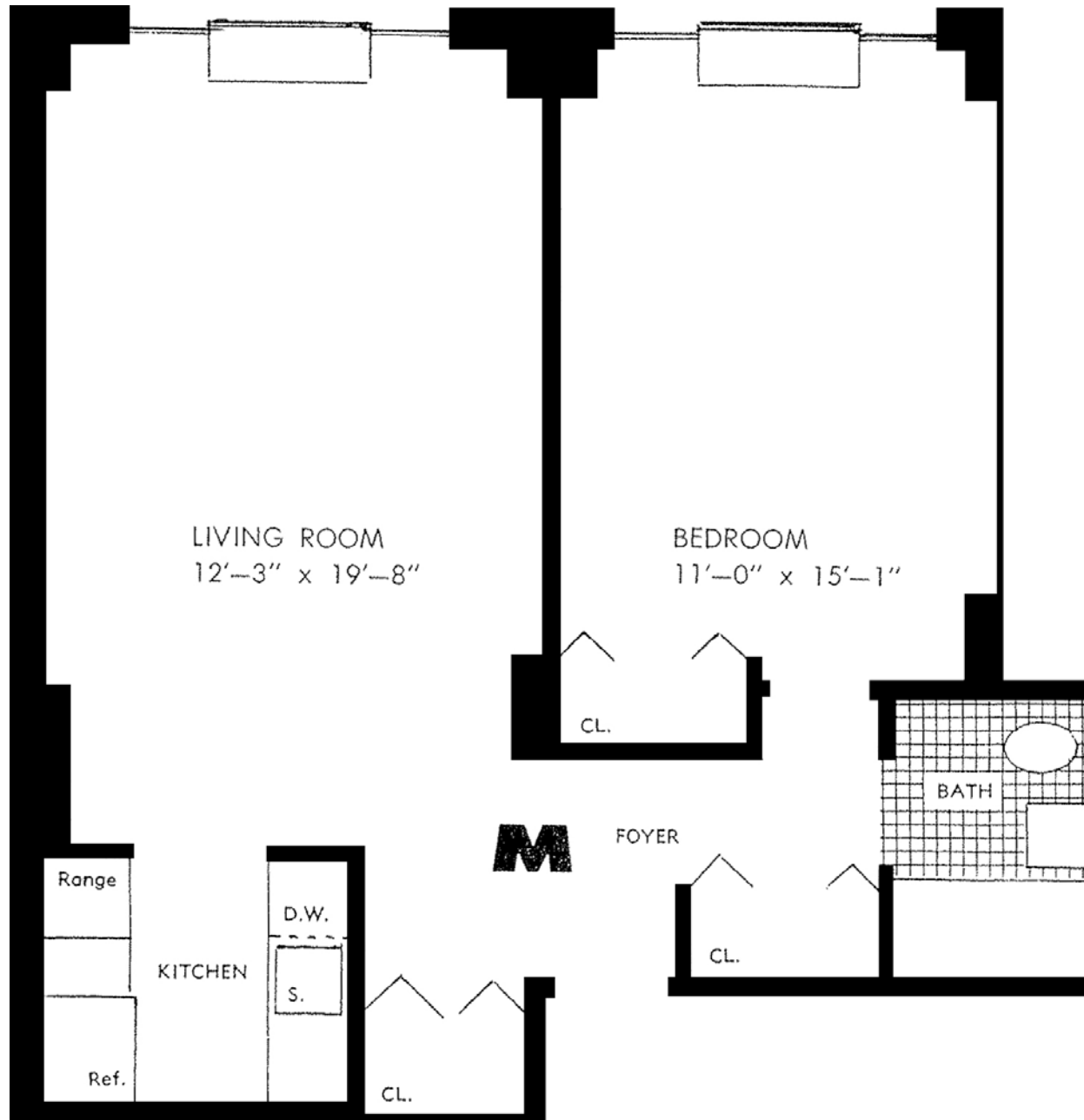
ABBREVIATIONS

- CL. Closet
- D.W. Dish Washer
- L.C. Linen Closet
- Ref. Refrigerator
- S. Sink
- W.I. Walk In

**FLOORS 2 Thru 12**

NOTE: All dimensions are approximate. Plan is subject to change in fenestration and/or other revisions deemed advisable by the Department of Housing and Buildings or other departments having jurisdiction over same, or necessary due to job condition.

330  
WEST  
56<sup>th</sup>  
STREET



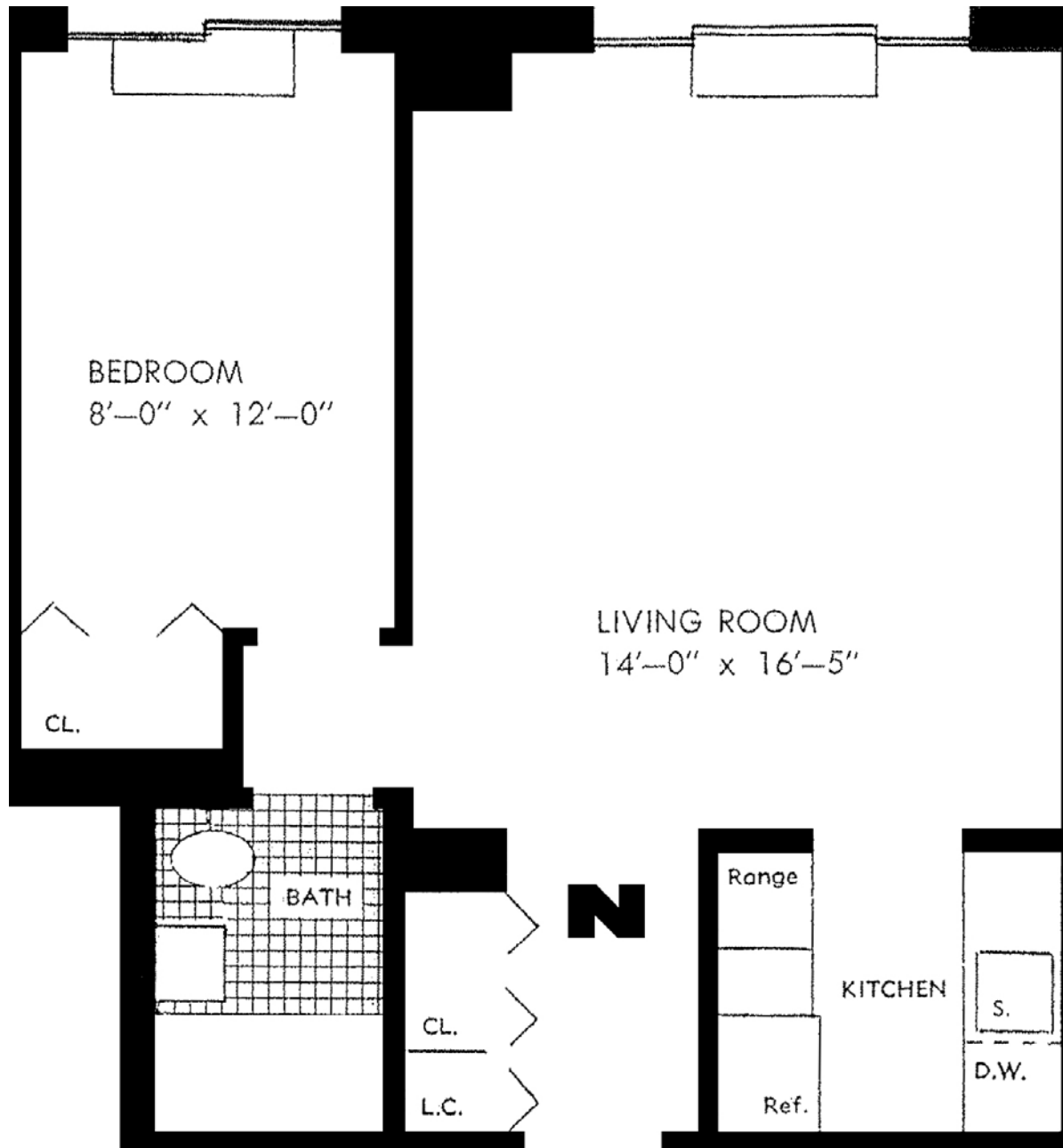
ABBREVIATIONS

- CL. Closet
- D.W. Dish Washer
- L.C. Linen Closet
- Ref. Refrigerator
- S. Sink
- W.I. Walk In

**FLOORS 2 Thru 12**

NOTE: All dimensions are approximate. Plan is subject to change in fenestration and/or other revisions deemed advisable by the Department of Housing and Buildings or other departments having jurisdiction over same, or necessary due to job condition.

330  
WEST  
56<sup>th</sup>  
STREET



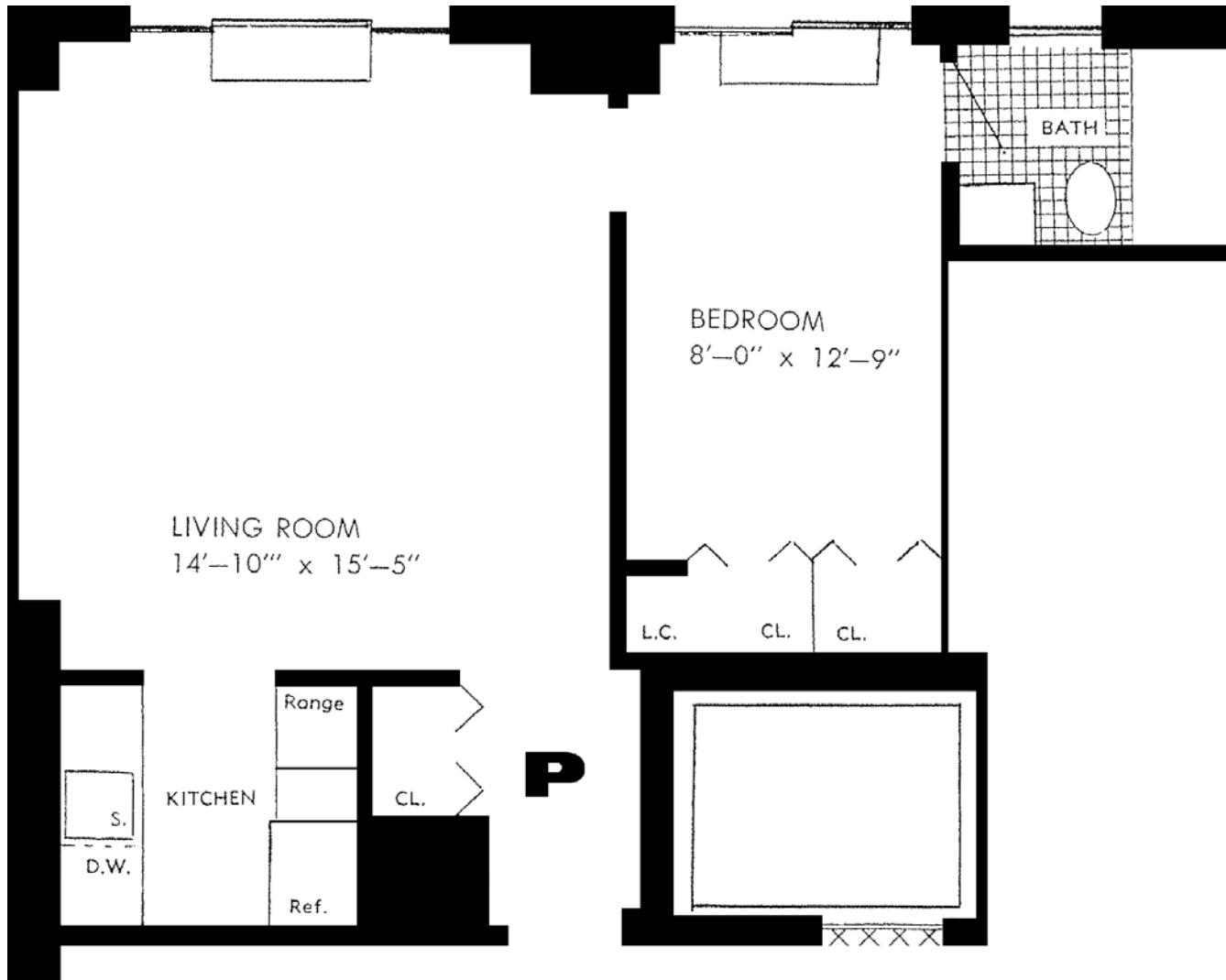
ABBREVIATIONS

- CL. Closet
- D.W. Dish Washer
- L.C. Linen Closet
- Ref. Refrigerator
- S. Sink
- W.I. Walk In

**FLOORS 2 Thru 12**

NOTE: All dimensions are approximate. Plan is subject to change in fenestration and/or other revisions deemed advisable by the Department of Housing and Buildings or other departments having jurisdiction over same, or necessary due to job condition.

330  
WEST  
56<sup>th</sup>  
STREET



ABBREVIATIONS

- CL. Closet
- D.W. Dish Washer
- L.C. Linen Closet
- Ref. Refrigerator
- S. Sink
- W.I. Walk In

**FLOORS 2 Thru 12**

NOTE: All dimensions are approximate. Plan is subject to change in fenestration and/or other revisions deemed advisable by the Department of Housing and Buildings or other departments having jurisdiction over same, or necessary due to job condition.